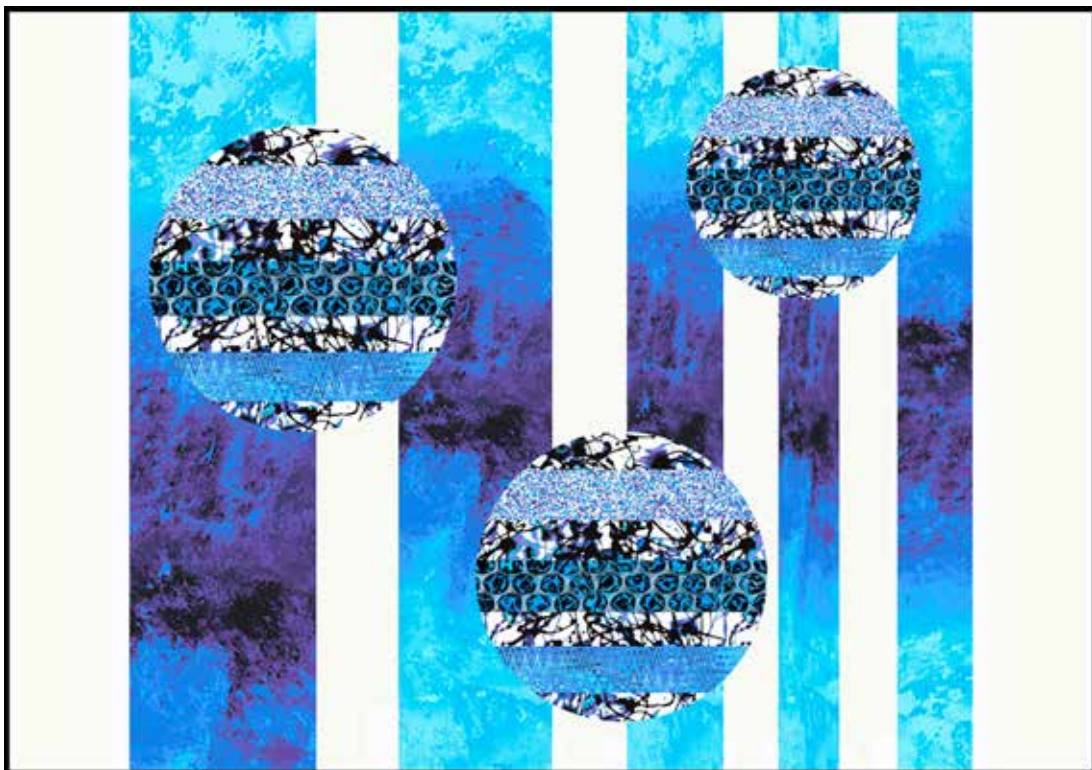


Urban Textures

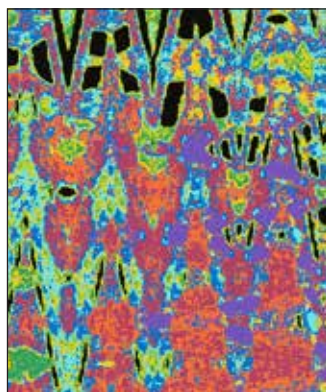
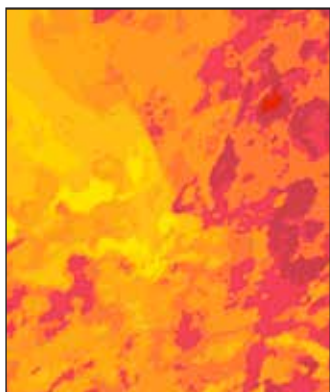
FABRICS BY SAQA (Studio Art Quilt Associates)



Spheres and Stripes
Quilt designed by:
Luana Rubin

Quilt Size: 60" x 43"

andoverfabrics.com



About Urban Textures

These designs were selected from an open contest to all SAQA members and curated by Luana Rubin and developed in collaboration with Andover Fabrics.

andover



makower uk
The Henley Studio

Free Pattern Download Available

1384 Broadway New York, NY 10018
Tel. (800) 223-5678 • andoverfabrics.com

5/30/14

Spheres & Stripes



Introducing Andover Fabrics new collection:

URBAN TEXTURES by SAQA (Studio Art Quilt Associates)

Quilt designed by Luana Rubin

Quilt finishes 60" x 43"

Contemporary designer prints bring an up-to-the minute freshness to this modern quilt. Bold strips of fabric form the background for the floating spheres that are fused or stitched in place.

This wall quilt is just the thing for a beginning quilter—or for an experienced sewer who wants an extraordinary design that is a snap to make.

Cutting Directions

Note: Read assembly directions before cutting patches. All measurements are cut sizes and include ¼" seam allowances. A fat ¼ is an 18" x 21"-22" cut of fabric. WOF designates the width of fabric from selvedge to selvedge (approximately 43" wide).

- Fabric A** Cut (1) strip 11" x 43" (WOF)
Cut (1) strip 9" x 43" (WOF)
Cut (1) strip 6" x 43" (WOF)
Cut (1) strip 4½" x 43" (WOF)
Cut (1) strip 4" x 43" (WOF)
- Fabric B** Cut (4) strips 3" x 19", cut crosswise
Cut (4) strips 2½" x 18"
Cut (4) strips 2½" x 14"
- Fabric C** Cut (1) strip 3½" x 19"
Cut (1) strips 3½" x 18"
Cut (1) strips 2½" x 14"
- Fabric D** Cut (1) strip 3½" x 19"
Cut (1) strips 3½" x 18"
Cut (1) strips 2½" x 14"
- Fabric E** Cut (1) strip 3½" x 19"
Cut (1) strips 3½" x 18"
Cut (1) strips 2½" x 14"
- Fabric F** Cut (2) strips 7" x 43" (WOF)
Cut (2) strips 5" x 43" (WOF)
Cut (2) strips 3½" x 43" (WOF)
- Fabric G** Cut (6) strips 2½" x WOF for binding
- Backing** Cut (2) panels 35" x 51", pieced to fit quilt top with overlap on all sides

Fabric Requirements

		Yardage	Fabric
Fabric A	setting	1⅛ yards	7476-B
Fabric B	circles	½ yard	7477-B
Fabric C	circles	fat ¼ yard	7478-B
Fabric D	circles	fat ¼ yard	7479-B
Fabric E	circles	fat ¼ yard	7483-B
Fabric F	setting	1 yard	A-T-White Lies
Fabric G	binding	½ yard	A-T-Magnum
Backing		3 yards	7482-B

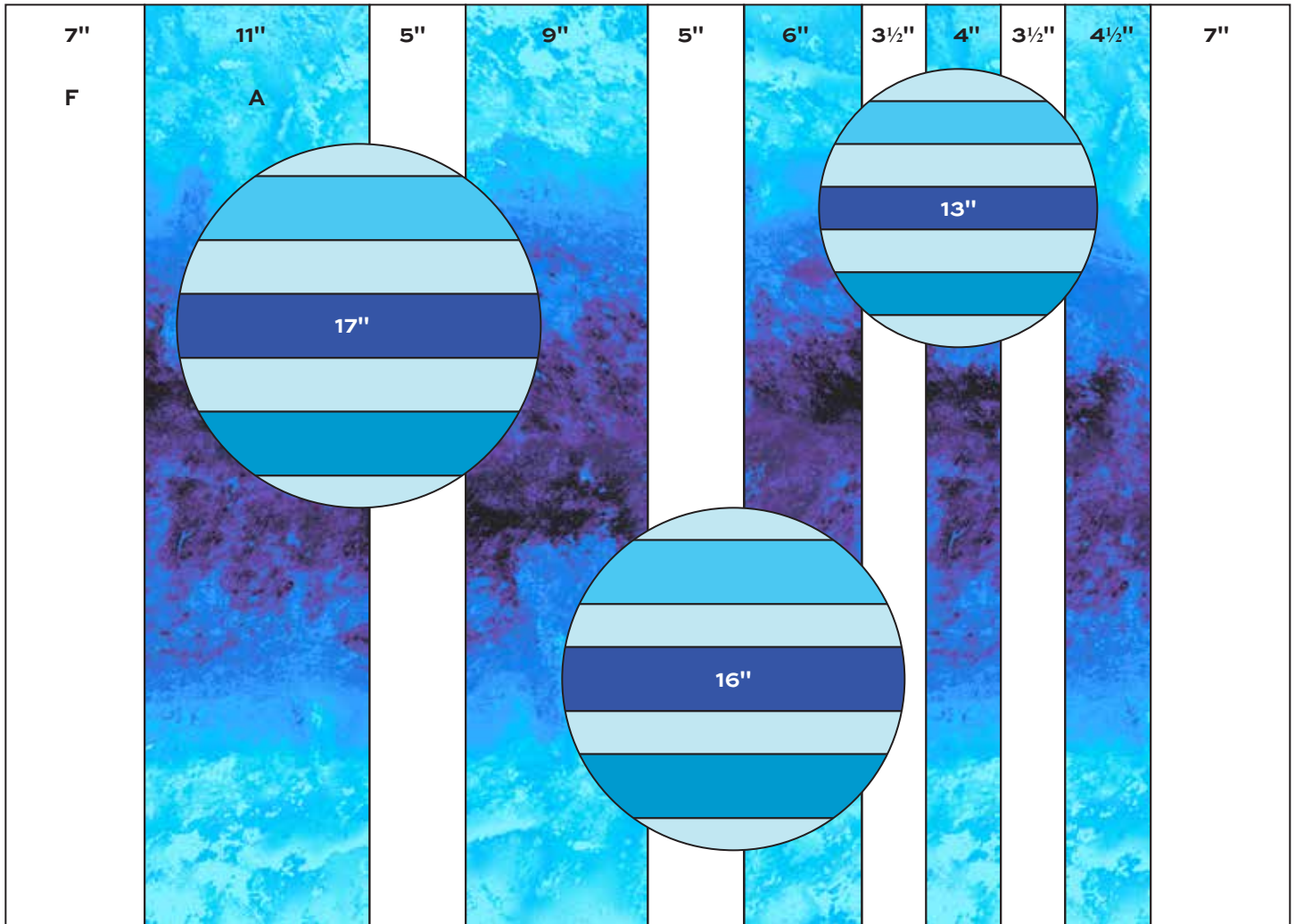
Making the Quilt

1. Referring to the Quilt Diagram, join Fabric A and Fabric F strips in the order shown. Note: If the WOF is wider on one of the fabrics, don't worry. Just join the strips even at the top. They can be trimmed later. Press seam allowances toward Fabric A.
2. Referring to the Sphere diagrams, join the strips in the order shown to make 3 bands. Press seam allowances open to reduce bulk.
3. If you choose to fuse the appliqué, draw 3 circles onto the paper side of paper-backed fusible web with these diameters: 17", 16", and 13". Cut out around the circles, leaving some paper beyond the drawn line. Following manufacturer's instructions, fuse a circle to the wrong side of the appropriate band, shifting the circle so there is an equal amount of Fabric B at the top and bottom. Cut out the circle on the drawn line. Repeat for all 3 circles. Referring to the quilt diagram, position and fuse the patches on the background. Finish the edges with a decorative machine stitch using contrasting thread, or use an invisible thread with a blind appliqué machine stitch.
4. An alternative method is to cut out the circles from freezer paper. Press each paper circle to the wrong side of a pieced band. Cut out the fabric circle, adding a turn-under allowance beyond the paper pattern. Dab a bit of fabric starch in the allowance along the edge of the paper circle, fold the allowance over the paper, and press with an iron until dry. Remove the paper. Position each circle on the background, and hand stitch or finish using a machine straight stitch.
5. Trim the top and bottom edges of the quilt if necessary.

Spheres & Stripes Quilt

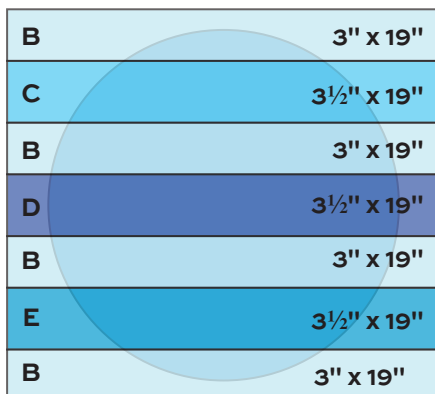
Finishing the Quilt

6. Layer the quilt with batting and backing and baste. Quilt in the ditch around strips and circles. Quilt the background as desired. Bind to finish the quilt.

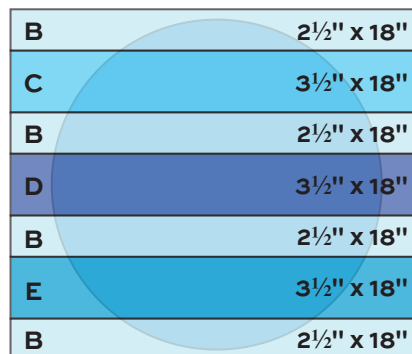


Quilt Diagram

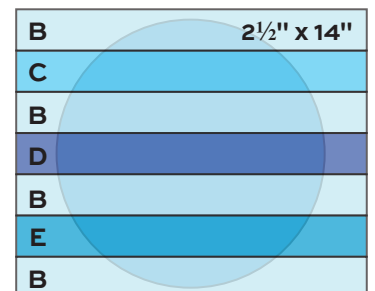
17" Circle



16" Circle

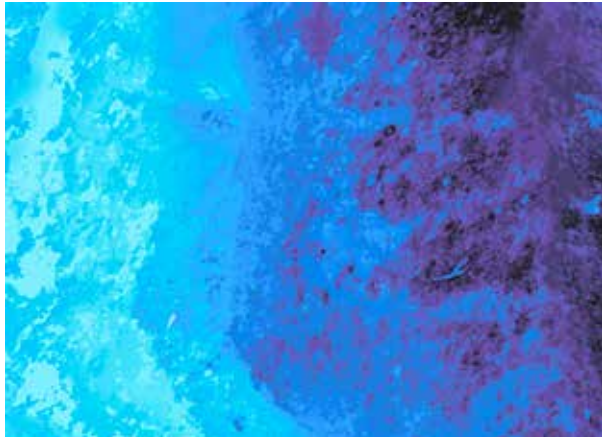


13" Circle

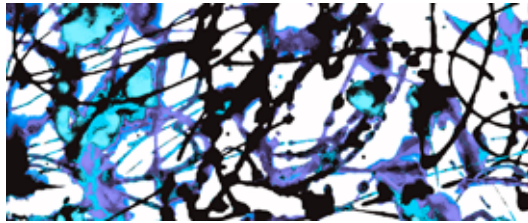


Urban Textures

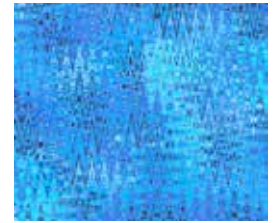
FABRICS BY SAQA



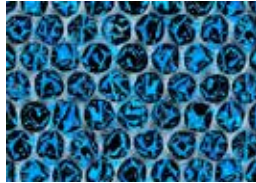
7476-B*



7477-B*



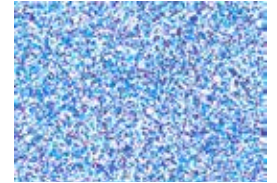
7478-B*



7479-B*



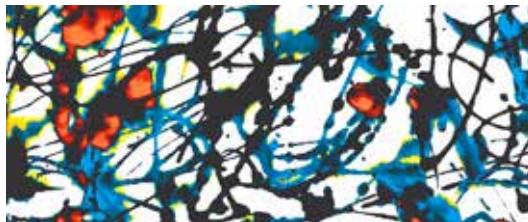
7482-B*



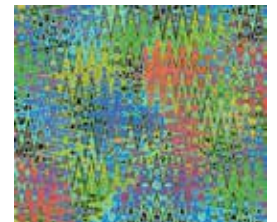
7483-B*



7476-K



7477-K



7478-K



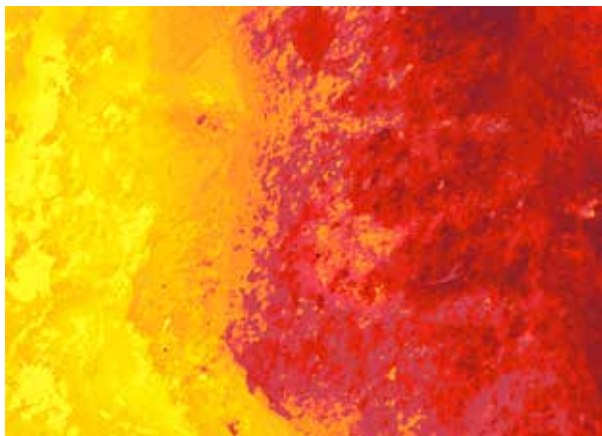
7479-K



7482-K



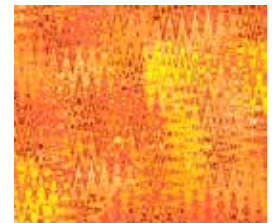
7483-K



7476-O



7477-O



7478-O



7479-O



7482-O



7483-O

Blend with fabrics from Andover Solids



A-T-White Lies*



A-T-Magnum*

*Indicates fabrics used in quilt pattern. Fabrics shown are 15% of actual size.

andover



makower uk
The Henley Studio

Free Pattern Download Available

1384 Broadway New York, NY 10018
Tel. (800) 223-5678 • andoverfabrics.com